

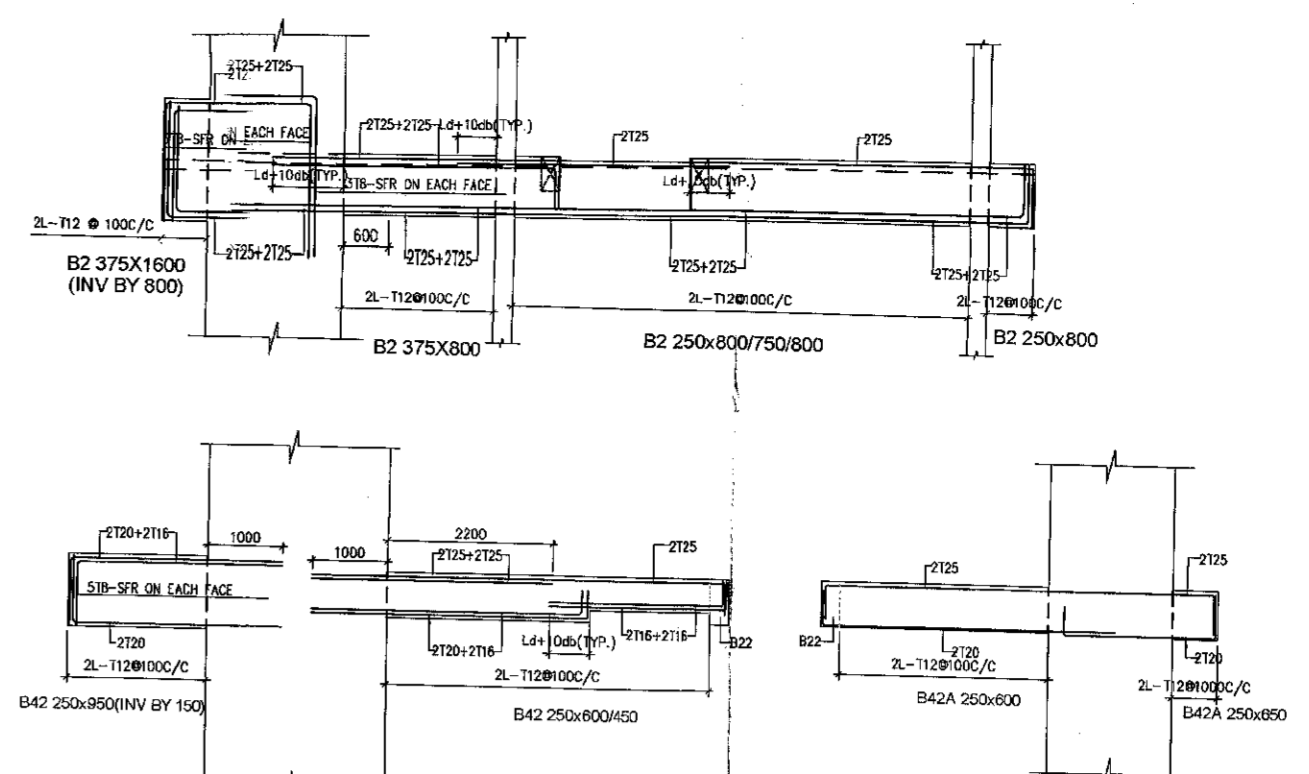
1. THE HOOPS ARE PROVIDED OVER THE ENTIRE LAP LENGTH SHALL NOT EXCEEDING 150mm.
2. THE LAP LENGTH SHALL NOT BE LESS THAN BAR DEVELOPMENT LENGTH IN TENSION.
3. THE LAP SHALL NOT BE PROVIDED, IF:
  - a) WITHIN THE JOINT
  - b) WITH A DISTANCE OF 2d FROM JOINT FACE
  - c) WITHIN A QUARTER LENGTH OF MEMBER WHERE FLEXURAL YIELDING MAY GENERALLY OCCUR UNDER THE EFFECT OF EARTHQUAKE FORCE.
  - d) NOT MORE THAN 50% OF BARS SPLICED AT ONE SECTION
  - e) USE OF WELD SPLICES & MECHANICAL CONNECTIONS MAY ALSO BE MADE AS PER IS 456-2000.

TYP. BAR DETAIL FOR SPECIAL DUCTILE MOMENT RESISTING FRAME AS PER 1920 -1993(2002 & 2003) & S.P.34(S & T)-1987

LAP SPLICE IN BEAM

HOOP DETAIL

BRACKET DETAILS-BR1-200X450



B1 1.No.	SPAN S/11 SIZE 375x800 STRIPUPS 2L-T12 @ 100C/C TOP REINF. 2L-T12 @ 100C/C BOT REINF. 2L-T12 @ 100C/C	B2 1.No.	SPAN S/14 SIZE 250x750 STRIPUPS 2L-T12 @ 100C/C TOP REINF. 2L-T12 @ 100C/C BOT REINF. 2L-T12 @ 100C/C	B3 1.No.	SPAN S/8 SIZE 250x750 STRIPUPS 2L-T12 @ 100C/C TOP REINF. 2L-T12 @ 100C/C BOT REINF. 2L-T12 @ 100C/C	B4 1.No.	SPAN S/8 SIZE 250x800 STRIPUPS 2L-T12 @ 100C/C TOP REINF. 2L-T12 @ 100C/C BOT REINF. 2L-T12 @ 100C/C	B5 1.No.	SPAN S/7 SIZE 250x800 STRIPUPS 2L-T12 @ 100C/C TOP REINF. 2L-T12 @ 100C/C BOT REINF. 2L-T12 @ 100C/C	B6 1.No.	SPAN S/7 SIZE 250x800 STRIPUPS 2L-T12 @ 100C/C TOP REINF. 2L-T12 @ 100C/C BOT REINF. 2L-T12 @ 100C/C	B7 1.No.	SPAN S/7 SIZE 250x800 STRIPUPS 2L-T12 @ 100C/C TOP REINF. 2L-T12 @ 100C/C BOT REINF. 2L-T12 @ 100C/C	B8 1.No.	SPAN S/7 SIZE 250x800 STRIPUPS 2L-T12 @ 100C/C TOP REINF. 2L-T12 @ 100C/C BOT REINF. 2L-T12 @ 100C/C	B9 1.No.	SPAN S/7 SIZE 250x800 STRIPUPS 2L-T12 @ 100C/C TOP REINF. 2L-T12 @ 100C/C BOT REINF. 2L-T12 @ 100C/C	B10 1.No.	SPAN S/7 SIZE 250x800 STRIPUPS 2L-T12 @ 100C/C TOP REINF. 2L-T12 @ 100C/C BOT REINF. 2L-T12 @ 100C/C	B11 1.No.	SPAN S/7 SIZE 250x800 STRIPUPS 2L-T12 @ 100C/C TOP REINF. 2L-T12 @ 100C/C BOT REINF. 2L-T12 @ 100C/C	B12 1.No.	SPAN S/7 SIZE 250x800 STRIPUPS 2L-T12 @ 100C/C TOP REINF. 2L-T12 @ 100C/C BOT REINF. 2L-T12 @ 100C/C	B13 1.No.	SPAN S/7 SIZE 250x800 STRIPUPS 2L-T12 @ 100C/C TOP REINF. 2L-T12 @ 100C/C BOT REINF. 2L-T12 @ 100C/C	B14 1.No.	SPAN S/7 SIZE 250x800 STRIPUPS 2L-T12 @ 100C/C TOP REINF. 2L-T12 @ 100C/C BOT REINF. 2L-T12 @ 100C/C	B15 1.No.	SPAN S/7 SIZE 250x800 STRIPUPS 2L-T12 @ 100C/C TOP REINF. 2L-T12 @ 100C/C BOT REINF. 2L-T12 @ 100C/C	B16 1.No.	SPAN S/7 SIZE 250x800 STRIPUPS 2L-T12 @ 100C/C TOP REINF. 2L-T12 @ 100C/C BOT REINF. 2L-T12 @ 100C/C	B17 1.No.	SPAN S/7 SIZE 250x800 STRIPUPS 2L-T12 @ 100C/C TOP REINF. 2L-T12 @ 100C/C BOT REINF. 2L-T12 @ 100C/C	B18 1.No.	SPAN S/7 SIZE 250x800 STRIPUPS 2L-T12 @ 100C/C TOP REINF. 2L-T12 @ 100C/C BOT REINF. 2L-T12 @ 100C/C	B19 1.No.	SPAN S/7 SIZE 250x800 STRIPUPS 2L-T12 @ 100C/C TOP REINF. 2L-T12 @ 100C/C BOT REINF. 2L-T12 @ 100C/C	B20 1.No.	SPAN S/7 SIZE 250x800 STRIPUPS 2L-T12 @ 100C/C TOP REINF. 2L-T12 @ 100C/C BOT REINF. 2L-T12 @ 100C/C	B21 1.No.	SPAN S/7 SIZE 250x800 STRIPUPS 2L-T12 @ 100C/C TOP REINF. 2L-T12 @ 100C/C BOT REINF. 2L-T12 @ 100C/C	B22 1.No.	SPAN S/7 SIZE 250x800 STRIPUPS 2L-T12 @ 100C/C TOP REINF. 2L-T12 @ 100C/C BOT REINF. 2L-T12 @ 100C/C	B23 1.No.	SPAN S/7 SIZE 250x800 STRIPUPS 2L-T12 @ 100C/C TOP REINF. 2L-T12 @ 100C/C BOT REINF. 2L-T12 @ 100C/C	B24 1.No.	SPAN S/7 SIZE 250x800 STRIPUPS 2L-T12 @ 100C/C TOP REINF. 2L-T12 @ 100C/C BOT REINF. 2L-T12 @ 100C/C	B25 1.No.	SPAN S/7 SIZE 250x800 STRIPUPS 2L-T12 @ 100C/C TOP REINF. 2L-T12 @ 100C/C BOT REINF. 2L-T12 @ 100C/C	B26 1.No.	SPAN S/7 SIZE 250x800 STRIPUPS 2L-T12 @ 100C/C TOP REINF. 2L-T12 @ 100C/C BOT REINF. 2L-T12 @ 100C/C	B27 1.No.	SPAN S/7 SIZE 250x800 STRIPUPS 2L-T12 @ 100C/C TOP REINF. 2L-T12 @ 100C/C BOT REINF. 2L-T12 @ 100C/C	B28 1.No.	SPAN S/7 SIZE 250x800 STRIPUPS 2L-T12 @ 100C/C TOP REINF. 2L-T12 @ 100C/C BOT REINF. 2L-T12 @ 100C/C	B29 1.No.	SPAN S/7 SIZE 250x800 STRIPUPS 2L-T12 @ 100C/C TOP REINF. 2L-T12 @ 100C/C BOT REINF. 2L-T12 @ 100C/C	B30 1.No.	SPAN S/7 SIZE 250x800 STRIPUPS 2L-T12 @ 100C/C TOP REINF. 2L-T12 @ 100C/C BOT REINF. 2L-T12 @ 100C/C	B31 1.No.	SPAN S/7 SIZE 250x800 STRIPUPS 2L-T12 @ 100C/C TOP REINF. 2L-T12 @ 100C/C BOT REINF. 2L-T12 @ 100C/C	B32 1.No.	SPAN S/7 SIZE 250x800 STRIPUPS 2L-T12 @ 100C/C TOP REINF. 2L-T12 @ 100C/C BOT REINF. 2L-T12 @ 100C/C	B33 1.No.	SPAN S/7 SIZE 250x800 STRIPUPS 2L-T12 @ 100C/C TOP REINF. 2L-T12 @ 100C/C BOT REINF. 2L-T12 @ 100C/C	B34 1.No.	SPAN S/7 SIZE 250x800 STRIPUPS 2L-T12 @ 100C/C TOP REINF. 2L-T12 @ 100C/C BOT REINF. 2L-T12 @ 100C/C	B35 1.No.	SPAN S/7 SIZE 250x800 STRIPUPS 2L-T12 @ 100C/C TOP REINF. 2L-T12 @ 100C/C BOT REINF. 2L-T12 @ 100C/C	B36 1.No.	SPAN S/7 SIZE 250x800 STRIPUPS 2L-T12 @ 100C/C TOP REINF. 2L-T12 @ 100C/C BOT REINF. 2L-T12 @ 100C/C	B37 1.No.	SPAN S/7 SIZE 250x800 STRIPUPS 2L-T12 @ 100C/C TOP REINF. 2L-T12 @ 100C/C BOT REINF. 2L-T12 @ 100C/C	B38 1.No.	SPAN S/7 SIZE 250x800 STRIPUPS 2L-T12 @ 100C/C TOP REINF. 2L-T12 @ 100C/C BOT REINF. 2L-T12 @ 100C/C	B39 1.No.	SPAN S/7 SIZE 250x800 STRIPUPS 2L-T12 @ 100C/C TOP REINF. 2L-T12 @ 100C/C BOT REINF. 2L-T12 @ 100C/C	B40 1.No.	SPAN S/7 SIZE 250x800 STRIPUPS 2L-T12 @ 100C/C TOP REINF. 2L-T12 @ 100C/C BOT REINF. 2L-T12 @ 100C/C	B41 1.No.	SPAN S/7 SIZE 250x800 STRIPUPS 2L-T12 @ 100C/C TOP REINF. 2L-T12 @ 100C/C BOT REINF. 2L-T12 @ 100C/C	B42 1.No.	SPAN S/7 SIZE 250x800 STRIPUPS 2L-T12 @ 100C/C TOP REINF. 2L-T12 @ 100C/C BOT REINF. 2L-T12 @ 100C/C	B43 1.No.	SPAN S/7 SIZE 250x800 STRIPUPS 2L-T12 @ 100C/C TOP REINF. 2L-T12 @ 100C/C BOT REINF. 2L-T12 @ 100C/C	B44 1.No.	SPAN S/7 SIZE 250x800 STRIPUPS 2L-T12 @ 100C/C TOP REINF. 2L-T12 @ 100C/C BOT REINF. 2L-T12 @ 100C/C	B45 1.No.	SPAN S/7 SIZE 250x800 STRIPUPS 2L-T12 @ 100C/C TOP REINF. 2L-T12 @ 100C/C BOT REINF. 2L-T12 @ 100C/C	B46 1.No.	SPAN S/7 SIZE 250x800 STRIPUPS 2L-T12 @ 100C/C TOP REINF. 2L-T12 @ 100C/C BOT REINF. 2L-T12 @ 100C/C	B47 1.No.	SPAN S/7 SIZE 250x800 STRIPUPS 2L-T12 @ 100C/C TOP REINF. 2L-T12 @ 100C/C BOT REINF. 2L-T12 @ 100C/C	B48 1.No.	SPAN S/7 SIZE 250x800 STRIPUPS 2L-T12 @ 100C/C TOP REINF. 2L-T12 @ 100C/C BOT REINF. 2L-T12 @ 100C/C	B49 1.No.	SPAN S/7 SIZE 250x800 STRIPUPS 2L-T12 @ 100C/C TOP REINF. 2L-T12 @ 100C/C BOT REINF. 2L-T12 @ 100C/C	B50 3.No.	SPAN S/7 SIZE 250x800 STRIPUPS 2L-T12 @ 100C/C TOP REINF. 2L-T12 @ 100C/C BOT REINF. 2L-T12 @ 100C/C
-------------	---	-------------	---	-------------	--	-------------	--	-------------	--	-------------	--	-------------	--	-------------	--	-------------	--	--------------	--	--------------	--	--------------	--	--------------	--	--------------	--	--------------	--	--------------	--	--------------	--	--------------	--	--------------	--	--------------	--	--------------	--	--------------	--	--------------	--	--------------	--	--------------	--	--------------	--	--------------	--	--------------	--	--------------	--	--------------	--	--------------	--	--------------	--	--------------	--	--------------	--	--------------	--	--------------	--	--------------	--	--------------	--	--------------	--	--------------	--	--------------	--	--------------	--	--------------	--	--------------	--	--------------	--	--------------	--	--------------	--	--------------	--	--------------	--	--------------	--

- SPECIFICATIONS:-**
- ALL DIMENSIONS ARE IN MILLIMETRES UNLESS OTHERWISE STATED.
  - ALL EXTERNAL WALLS ARE 200 TH & ALL INTERNAL WALLS ARE 125 TH.
  - THE DEPTH OF S.U.G.W.R. & SEPTIC TANK SHALL NEVER EXCEED THE DEPTH OF FOUNDATION.
  - BRICK WORK 200 TH. MORTAR 1:3 & BRICK WORK 100 TH. MORTAR 1:4.
  - ALL R.C.C. WORKS EXCEPT FOUNDATION MS&S GRADE OF STEEL BE 415, CODE 198-1978.
  - ALL SHORTCUTS OF PRECAUTIONARY MEASURES WILL BE TAKEN AT THE TIME OF CONSTRUCTION.
  - OTHERS ITEM ARE AS PER I.S. SPECIFICATION.

**DECLARATION OF GEO-TECHNICAL ENGINEER:**

UNDERSIGNED HAS INSPECTED THE SITE AND CARRIED OUT SOIL INVESTIGATION THEREON. IT IS CERTIFIED THAT THE EXISTING SOIL OF THE SITE IS ABLE TO CARRY THE LOADS COMING FROM THE PROPOSED CONSTRUCTION AND THE FOUNDATION SYSTEM PROPOSED HEREIN IS SAFE AND STABLE IN ALL RESPECTS FROM GEO-TECHNICAL POINT OF VIEW.

**Jishnu Pal**  
**JISHNU PAL**  
 B.Tech (Civil), M.E. (Geo-tech)  
 KMC Reg. No. G.T/1/32  
 G.T.R/NKDA/10/0043  
 22/RJSSON/G.T-1/2016-17  
 HMC Reg. No. BCTE/CLASS-1/15

SIGNATURE OF GEO-TECHNICAL ENGR.

I HAVE REVIEWED & CHECKED THE STRUCTURAL DRAWING AND DESIGN DETAILS OF THE PROJECT WHICH HAS BEEN DONE IN ACCORDANCE WITH THE NATIONAL BUILDING CODE OF INDIA. I CERTIFY THAT THE STRUCTURE WILL BE SAFE & STABLE AGAINST ALL VERTICAL AND LATERAL LOADS AND WILL BE FIT FOR HABITABLE USE.

**Utpal Santra**  
**UTPAL SANTRA**  
 B.C.E., M.C.E. (STRUCT.)  
 F.I.E.-F1212601  
 HMC Expanded Structural Reviewer  
 E.S.R. (1)5810

SIGNATURE OF STRUCTURAL REVIEWER.

**CERTIFICATE OF STRUCTURAL ENGINEER:**

THIS IS TO CERTIFY THAT THE STRUCTURAL DESIGN AND DRAWING OF BOTH FOUNDATION AND SUPER STRUCTURE OF THE BUILDING HAS BEEN MADE BY ME CONSIDERING ALL POSSIBLE LOADS INCLUDING THE SEISMIC LOADS AS PER THE NATIONAL BUILDING CODE OF INDIA AND CERTIFIED THAT IT IS SAFE AND STABLE IN ALL RESPECTS.

**Sumita Deo**  
**SUMITA DEO**  
 M.C.E., M.I.E., C.E.  
 ESE/1/93

SIGNATURE OF STRUCTURAL ENGR.

**WE DO HERE BY UNDERTAKE WITH FULL RESPONSIBILITY THAT - (1) WE SHALL ENGAGE ARCHITECT & E.S.E. DURING CONSTRUCTION. (2) WE SHALL FOLLOW THE INSTRUCTION OF ARCHITECT & E.S.E. DURING CONSTRUCTION OF THE BUILDING (AS PER B.B.PLAN). (3) K.M.C. AUTHORITY WILL NOT BE RESPONSIBLE FOR STRUCTURAL STABILITY OF THE BUILDING & ADJOINING STRUCTURE. (4) IF ANY SUBMITTED DOCUMENTS ARE FOUND TO BE FAKE, THE K.M.C. AUTHORITY WILL REVOKE THE SANCTION PLAN. (5) THE CONSTRUCTION OF WATER RESERVOIR AND SEPTIC TANK WILL BE UNDER THE GUIDANCE OF ARCHITECT E.S.E.**

For Kolkata Metropolitan Development Authority  
 (H.M. Prasad Sharma)  
 Constituted Attorney

SIGNATURE OF OWNER  
 HEREBY CERTIFY THAT THE ERECTION OF BUILDING ON PREMISES NO. P-103 C.I.T. SCHEME (III), KOLKATA-700048 IS UNDER MY SUPERVISION. ALSO CERTIFY THAT THE PROPOSED CHANGES IN LAYOUT HAS BEEN DRAWN AS PER PROVISION OF K.M.C. BUILDING RULES 2009.

**Subir Kumar Basu**  
**SUBIR KUMAR BASU**  
 Registered Architect  
 Regn. No. - CA/784375

SIGNATURE OF ARCHITECT.

**PROJECT:-**  
 PROPOSED ADDITION OF 4 NOS. FLOOR (HT-100.1 M) OVER AN EXISTING B+G+27 STORED3 NOS TOWERS) RESIDENTIAL BUILDING WITH PODIUM AND G+V+G+VI STORED CIRCULAR BLOCK U/S 394 OF K.M.C. ACT 19180 READ WITH 69A(I)(a), ALONG WITH U/R 26(2a)&(2b) OF K.M.C. BUILDING RULE 2009 AT PREMISES NO. P-103 C.I.T. SCHEME (III - M), MANICKTALA, WARD - 32, BOROUGH - III KOLKATA - 700 054.

PREVIOUS B.P. NO. 201309010, DATED 23.03.13. SUBSEQUENTLY REVALIDATED FURTHER 5 YEARS

Architect:  
**Subir Kumar Basu**  
 CONSULTING ARCHITECTS & ENGINEERS  
 4, BROAD STREET KOLKATA - 700019  
 website : www.subirkumarbasu.com

Civil & Structural Consultants:  
**M.N CONSULTANTS (Pvt) Ltd.**  
 MNC HOUSE  
 1516, RAJDANGA MAIN ROAD  
 KOLKATA - 700 107  
 Ph. No. - 913324410882/91334016500  
 FAX. NO. 913324410885  
 E-MAIL: mncncp2008@gmail.com.

TYP. FLOOR BEAM SCHEDULE (TOWER-01,02&03)

Drawn: A.M. Scale: AS SHOWN Date: 10.10.2023  
 Job No: 2338 Drawing No: CORP-T1-S50-06-03

**PARTY'S COPY**

Structural plan and design calculation prepared by the structural engineer have been kept with B.P. No. 2623030053 Date 13-10-2023 for record of the Kolkata Municipal Corporation without verification. No deviation from the submitted structural plan should be made at the time of erection without submitting fresh structural plan along with design calculation and stability certificate in the prescribed form. Necessary steps should be taken for the safety of the adjoining premises public and private properties and safety of human life during construction.

*[Signature]*  
EXECUTIVE ENGINEER/ASST. ENGINEER  
BOROUGH NO. - 11

Necessary steps should be taken for the safety of the lives of the adjoining public and private properties during construction.

**RESIDENTIAL BUILDING**

Building Department  
Borough-III, K.M.C.  
Date: 13.10.23... Sign: *[Signature]*  
Content's Not Verified